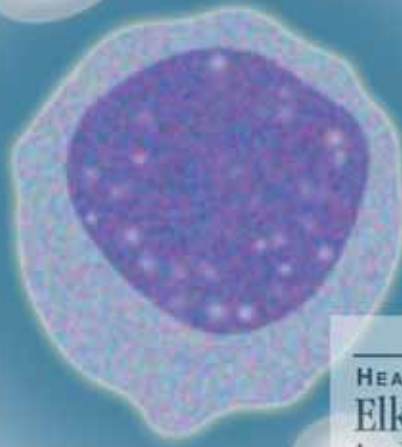


# Elkhart General Healthcare System

Regional Center for Cancer Services

Progressing on All Fronts

DIAGNOSIS



CLINICAL TRIALS

#### HEALTH BEAT

### Elkhart General participating in breast cancer study.



Elkhart, IN — Elkhart General Hospital is inviting area women to take part in a clinical trial to evaluate the effectiveness of certain drugs that may help prevent breast cancer.

According to Robin Zon, M.D., principal investigator for the study, the trial will test the effectiveness of two drugs

prevent breast cancer. "The only way to prove the potential of this drug is to do a clinical trial in which the risks and benefits of each drug are directly compared," says Zon.

"We plan to recruit approximately 200 Elkhart-area women who meet the criteria that will allow them to participate in this important study," says Zon, a board-certified medical oncologist.

PATIENT CARE



PATIENT EDUCATION

RESEARCH



TREATMENT





## Emphasizing Healthy Lifestyles

Important and sensible elements of a healthy lifestyle are symbolized in this photo of Computed Tomography Technologist Tami Thomas and Diagnostic Radiologist Al Harding, MD. Eat right. Exercise. And take advantage of the latest early detection capabilities of medical science, such as Cardiac SmartScore, which is technically known as “Gated Helical Computed Tomography.”

Emphasizing health and wellness through educational and screening programs is an important part of Elkhart General’s community outreach activities.

### **ABOUT OUR COVER**

Against the backdrop of a cancer cell, different but equally important aspects of the fight against cancer are represented. State-of-the-art treatment, clinical trial research that involves both treatment and prevention, patient care, and patient education and support are all part of the progress that is being made on a broad front.

## CHAIRMAN'S AND PRESIDENT'S REPORT

All businesses that desire to thrive must operate effectively and efficiently in all types of weather. Hospitals are no exception to that rule. We are proud to report that Elkhart General "made its bottom line" in 2000. We are equally

proud to report that we also improved our overall Parkside Patient Satisfaction Score. Staying in the black and keeping patients and their families well satisfied required the dedication and hard work of every member of our team-physicians, volunteers, nurses, all manner of skilled health care personnel, and Board members as well.

Tough economic times make all of us at Elkhart General thankful that we are a community not-for-profit health care organization. Your local "citizen" board members who govern Elkhart General are aware of immediate realities and are available and responsive to the dynamic challenges we face. We are indeed fortunate that we do not await orders or depend on guidance from a distant corporate office to meet the numerous and varied needs of our community.

"Making the bottom line" was the first priority for hospitals and health systems in 2000. Every indication is that this must remain the priority for the foreseeable future. According to the American Hospital Association, some 32 percent of hospitals lost money in 1999, and barely half -51.4 percent-maintained a profit margin of above three percent. A three-percent bottom line means a hospital earned below the rise in the Consumer Price Index and the annual medical inflation rate. This level of net income is insufficient to support the numerous human and "physical plant" needs of the organization.

The reasons for the difficult economic environment are complex, but, for the health care industry, they are in large part attributable to reduced reimbursements from Medicare, Medicaid, managed care, and commercial payers. At the same time the federal government is reducing financial support for hospitals, it is creating new legislation that adds to our costs. A case in point is the Health Insurance Portability and Accountability Act (HIPAA). The goals of HIPAA are admirable, particularly the effort to protect all aspects of patient privacy. But the HIPAA legislation is vague and excessive and may in fact reduce, not improve, a hospital's ability to provide high quality care.

The impact of reduced reimbursement may not be immediately apparent to the American public, or even to local consumers of a particular hospital's services. Nevertheless, the impact is very real and will inevitably result in an overall decline in the quality of health care in America. The same would be true of any business forced to operate in an oppressive climate for an extended period of time. To believe otherwise is simply not realistic.

If you would like to help or obtain more information on the critical issues confronting hospitals and the medical community, contact the American Hospital Association at [www.aha.org](http://www.aha.org), or call 1-877-422-2349.

In terms of promoting community health through education and outreach activities, 2000 was another busy, productive year. In May, the first annual African American Women's Day was co-sponsored by Elkhart General and the Minority Health Coalition of Elkhart County. Held at the Tolson Youth Center, the event featured medical oncologist William Kamanda, MD, discussing cancer prevention and a survivor of breast cancer relating her success story. A free brunch was provided, as well as massages, nutritional information, and gift baskets. In June, over 400 people attended the Annual Spring Health Fair at the Hospital. Free screening services included some 200-blood cholesterol tests, over 100 lung function tests, 18 depression screenings, and over 200 colorectal test strips were distributed.

A number of other highlights marked the year 2000. Our Regional Heart Center celebrated its first year in its new facility based on the "Center of Excellence" concept. As the cover of this Annual Report indicates, our Regional Center for Cancer Services made progress on a very broad front. Particularly satisfying was the formation of Indiana's only Community Clinical Oncology Program (CCOP), a cooperative effort among four area hospitals that will help fight cancer by improving opportunities for Michiana physicians and their patients to participate in national cancer treatment and prevention research. Supported by Elkhart General, LaPorte Regional Health System, Memorial Hospital of South Bend, and St. Joseph's Regional Medical Center in South Bend and Plymouth, IN, CCOP is funded through a grant from the National Cancer Institute, National Institutes of Health.

The CCOP project reflects Elkhart General's mission to improve the health of the community we serve. This commitment is carried out at the individual level by our physicians and all our hospital staff. We are very grateful to those hundreds of professionals who daily create the caring, compassionate environment that is Elkhart General.



KAREN THOMSON  
Chairman of the Board



GREGORY W. LINTJER, FACHE  
President

## Clinical Initiatives



## Progressing on all Fronts

Progress ranged from regional collaboration on cancer treatment and research to highly technical advances in radiation therapy to education and support for patients and their families.

Elkhart General, LaPorte Regional Health System, Memorial Hospital of South Bend, and St. Joseph's Regional Medical Center in South Bend and Plymouth joined together to create Indiana's first Community Clinical Oncology Program (CCOP). Funded through a grant from the National Cancer Institute, National Institutes of Health, CCOP improves opportunities for Michiana physicians and their patients to participate in national cancer treatment and prevention research, such as the breast cancer prevention STAR (Study of Tamoxifen and Raloxifene) trials. CCOP gives access to research trials not previously available to patients in this community. Research activity includes not only treatment for patients with cancer, but, just as importantly, cancer prevention and supportive care studies.

In the hands of skilled radiation oncologists and physicists, Intensity Modulated Radiation Therapy (IMRT) is remarkably effective in destroying cancer. Precise targeting allows a higher dose



of cancer-killing radiation to be delivered to the tumor, while minimizing side effects to surrounding healthy tissue.

In addition to opening a public Cancer Learning Center equipped with an internet-ready computer, several new support groups and educational programs were offered to cancer patients and their families. In fact, the headlines in Elkhart County were dominated by one such educational event in September. "L.A. Law" stars Jill Eikenberry and Michael Tucker presented "One Family's Success Story," a program describing the married couple's battle with breast cancer. Ms. Eikenberry discovered a malignant lump in her breast in 1985 and 15 years later she remains free of the disease and is leading a full, active life. The program was sponsored in part by the Martin Foundation and the Elkhart Hospice Fund.

*To help patients make informed decisions, a Breast Cancer Clinic was created that allows recently diagnosed women and their families to meet with a surgeon, a radiation oncologist, and a medical oncologist both individually and as a group all in one afternoon. Shown are Surgeon Kirby Gross, MD (left) and Oncology Care Coordinator Bobbie Owsley, RN, who remains with the patient throughout Clinic meetings.*

For a copy of the 1999-2000 Cancer Program Annual Report, call Community Relations at (219) 523-3303.

*From left: Elkhart General President Greg Lintjer, Actress Jill Eikenberry, Oncology Medical Director Robin Zon, MD, and Actor Michael Tucker on the stage of the ELCO Theatre, Elkhart.*



### An Experienced Surgical Team Celebrates "Year One" in a new Heart Center



In January 1997, Walter H. Halloran, MD led an experienced surgical team in performing the first open-heart surgery at Elkhart General – and in Elkhart County. From that day forward, patients from this area who needed critical, sophisticated heart procedures could choose to have those procedures done close to home. Patient volume grew dramatically.

To provide the best possible care, a new Heart and Critical Care Center was opened in February 2000. As the Medical Director of the Cardiothoracic Surgery program, Dr. Halloran played a major role in guiding the design of the new Center, which follows a "Center of Excellence" concept. Cardiovascular and critical care services are combined on one floor, creating a brand new 32,000 square-foot "Heart Center within a Hospital." This configuration is highly convenient and efficient for everyone involved: patients, families, doctors, nurses, and all other members of the heart and critical care teams. The state-of-the-art center includes three cardiovascular surgery suites, two cardiac catheterization laboratories, an 11-bed cardiovascular recovery unit, a 24-bed critical care unit, and comfortable waiting areas for families.

Since initiating the program, Dr. Halloran has personally performed well over 700 "bypasses" and other open-heart procedures at Elkhart General. As a team, the Heart Center surgeons have performed over 2,000 open-heart procedures.

Another important and growing feature of Heart Center services involves the work of interventional cardiologists, who since 1999 have performed over 500 angioplasties, including implanting stents such as Vice President Richard Cheney recently underwent.

Because of the extremely high skill level provided by nurses and other vital staff, patients with all types of critical injuries, such as severe head or chest trauma, are cared for in this Center.



## Early Detection of Heart Problems with “Cardiac SmartScore”

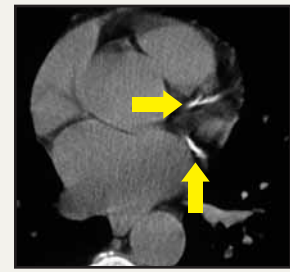
Much as a mammogram helps detect early-stage breast cancer, “Cardiac SmartScore” is a new technology that helps physicians identify calcified plaque in the arteries while there is still time to reduce the risk of a heart attack. Plaque build up and the problems associated with it are the leading cause of heart attacks.

Every 20 seconds, someone has a heart attack, and every minute someone dies from one. Remarkably, about one third of the people who arrive at an emergency room with a heart attack have had no chest pain or similar warning. It just happened.

Technically known as “Gated Helical Computed Tomography,” the new test is furnished by the Radiology Department. The SmartScore tests are interpreted by diagnostic radiologists, who then describe the results to the patient’s family doctor. Not only can the test identify a potentially deadly heart condition, it can be a life-saving warning signal for people who may be in the very early stage of plaque buildup. With guidance from their physician, modest adjustments in diet and lifestyle may well be enough to effectively deal with the problem.

The patient simply lies on a sliding table, fully clothed, and holds a deep breath for a brief period while the images are taken. Patients can even eat before the test. The “feet first” design of the unit minimizes the claustrophobic feeling sometimes associated with the CT process.

Cardiac SmartScore is a valuable addition to the other important tests that help physicians evaluate the heart, such as EKGs, stress echocardiograms, nuclear cardiac scans, and coronary angiography. Because of its exceptional clarity and detail, the test also has great potential for screening patients at high risk for lung cancer.



*The reason plaque is such a killer is its tendency to rupture and break loose from the lining of the coronary arteries. When this happens, a clot can form that will block the supply of blood to the heart, resulting in a heart attack.*

*The SmartScore exam is simple, painless, and fast.*



### Who should have a Cardiac SmartScore exam?

A Cardiac SmartScore exam can be a life-saver for men over 35 and women over 45 who are at a higher-than-normal risk of heart attack. Risk factors include:

- A family history of heart disease or stroke.
- Smoking
- High cholesterol levels
- High blood pressure
- Obesity
- High stress
- Diabetes
- Sedentary lifestyle

## Self-Management: The Cornerstone of Diabetes Care

The Outpatient Diabetes Education Program at Elkhart General was recently awarded the Education Recognition Certificate of the American Diabetes Association for meeting the national standard set by the National Diabetes Advisory Board. The three-year certification reflects the ability of Elkhart General's Diabetes Education staff to provide patients with the information and skills they need to self-manage their diabetes.

Diabetes is a disease that can be managed through lifestyle adjustments, medications, and blood glucose monitoring at home. According to Linda Schrock, RN, CDE, Manager of the Diabetes Program at Elkhart General, "It's not always easy, but patients who are dedicated to self-management can reduce the development and progression of complications from diabetes by 40-75 percent."

Earning the ADA certificates requires follow-up of patients who have participated in the program to see if they are applying and benefiting from their learning experience at Elkhart General. "The most recent survey clearly shows that many patients have adopted a good food plan and have lost weight, are exercising regularly, and are faithfully monitoring their glucose levels. Simply put, they are controlling their disease rather than letting the disease control them," Schrock reports.



**\*The American Diabetes Association Recognizes this education service as meeting the National Standards for Diabetes Self-Management Education.**



From left: Dietitian Karen Cleveland, RD; Diabetes Program Manager Linda Schrock, RN, CDE; and Diabetes Educator Yvonne Miller-Borsodi, RN.

In addition, there are ways to help prevent or delay the onset of the disease in the first place. Weight control and an active lifestyle across the lifespan are important measures to delay or prevent the onset of diabetes. It is also important to control triglycerides and blood pressure to prevent the serious complications of diabetes. Unfortunately, diabetes is increasing in all age groups. The leading risk factors for adult-onset, or type 2 diabetes include having a family history of diabetes, sedentary lifestyle and excessive weight.



## "Information Therapy:" The Web Comes of Age

Accurate information can be "good medicine." Informed consumers working closely with their physicians make better health decisions. These basic beliefs prompted Elkhart General to enrich its web site with volumes of health information. It's being called "Information Therapy," and the web made it possible.

We have teamed up with LaurusHealth to create a web site that is overflowing with useful health information. LaurusHealth was created by leading hospitals and physicians across the country to make sure that reliable health information is at our fingertips. All information is reviewed by physicians and comes from highly credible sources such as respected journals, research centers, government studies and national news services.

### The LaurusHealth Library

From the outset, [www.egh.org](http://www.egh.org) has provided information about Elkhart General services, upcoming educational events, support groups, and screenings...even job opportunities. Now our site is enriched with the following LaurusHealth resources.

#### Illnesses & Conditions

In-depth information and research on hundreds of diseases, from asthma to ulcers, including symptoms, prevention methods, and treatment options. "Drill down" capabilities for diseases include links to related sites.

#### Drug Guide

Provides patient education summaries on more than 2,400 common prescription medications, including side effects, drug interactions and dosage. Both brand name and generic drugs are included. And it's linked with "New FDA Approvals" site.

#### Medical Tests

Provides a basic understanding of more than 200 common medical tests and procedures, from a simple blood test to complex Magnetic Resonance Imaging (MRI). Includes reasons why the test is performed, preparation, associated risks, even how the tests make you feel.



**Health News**



The latest news that may affect you directly is reported, including health-related warnings and recent discoveries.

A full year's supply of daily news stories from Reuters health is readily accessible. The latest recalls of toys, baby equipment and food are provided. Consumers can search the National Library of Medicine's database on more than three million articles and view article abstracts.

**Healthy Living**



The "Healthy Living" section brings new articles about overall health and how it affects all aspects of your life. Fitness. Weight loss. Nutrition. Stress reduction. It's all there.

**Reliable Information Online or on Phone, 24-7**

Staffed by Registered Nurses, our Health Information Center continues to average some 600 calls per month. Consumers call to discuss a health concern, to obtain information about our physicians, or both. Now they sometimes call to validate or enhance information gathered on our web site. Both the Health Information Center and the web site are available around-the-clock, seven days a week. And both are free.



**Other Important  
2000 Initiatives**

Activities and Programs Supported in 2000 Included:

- ADEC
- Alzheimer's Association
- American Cancer Society
- American Heart Association
- Arthritis Foundation
- Beds and Britches, Etc.
- Breath EZ Support Group
- Circle of Hope Breast Cancer Support Group
- Critical Care Symposium
- Cystic Fibrosis Foundation
- Festival of Trees
- Free Depression Screenings
- Free Diabetes Screenings
- Freedom from Smoking
- Healthy Hearts Club Lecture Series
- Juvenile Diabetes Foundation
- The Leukemia & Lymphoma Society
- Man to Man Prostate Cancer Support Group
- March of Dimes Walk America
- Mental Health Association
- Michiana Cancer Survivors Association
- Mother's Day Mammograms
- Cancer Open Forum
- Ribbon of Hope Cancer Support Group
- Spring Health Fair
- The Great Race
- WNIT Auction
- Women & Health Luncheon Series
- WTRC Senior Expo
- Youth Services Bureau

**Report of Stewardship and Support**

Elkhart General is a tax-exempt, not-for-profit community-owned hospital governed by a Board of

Directors comprised of volunteers drawn from the community. The Board of Directors and hospital management work together to ensure that hospital profits are used to improve services, to ensure the long-term survival of the hospital, and to meet crucial health-related community needs.

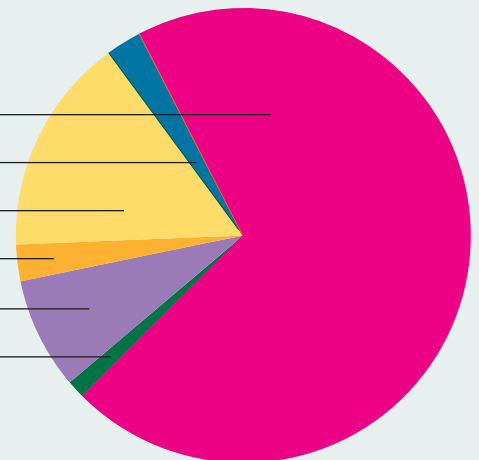
Each year, particular emphasis is placed on making sure everyone in the community receives the health care they need, not necessarily what they can afford. The simple truth is that Elkhart General is often the only source of health care for many of the poor and disadvantaged in our community, and this responsibility is taken very seriously.

During the last fiscal year, Elkhart General provided more than \$12 million in health services that were unreimbursed by Medicaid, and more than \$64 million unreimbursed by Medicare. In addition, the hospital provided community outreach contributions, or “non-billed” services, valued at over \$1.1 million for free and below-cost community screenings, educational lectures, and support for some 50 health-related, not-for-profit organizations. The hospital also furnished more than \$2.7 million in traditional charity care to patients. Additional details are provided in the chart and graph below.



Health care volunteerism takes many forms. Volunteering their leadership talents for key state health care organizations for 2001 are, from left to right: Plastic Surgeon Ronald K. Downs, MD, Chairman of the Indiana State Medical Association House of Delegates; Dee Watson, 25-year member of the Elkhart General Auxiliary who will serve as President of the Indiana Hospital and Health Association Auxiliary; and Elkhart General President Gregory W. Lintjer who will serve as Chairman of the Indiana Hospital and Health Association.

<b>Unreimbursed Medicaid Charges</b>	<b>\$12,376,202</b>
<b>Community Benefit Program</b>	<b>\$ 433,764</b>
<b>Traditional Charity Care</b>	<b>\$ 2,722,608</b>
<b>Medically Indigent Programs</b>	<b>\$ 446,524</b>
<b>Non-Billed Services</b>	<b>\$ 1,179,263</b>
<b>Low/Negative Margin Services</b>	<b>\$ 280,813</b>
<b>Total Community Benefit</b>	<b>\$17,439,174</b>



For more than 100 years, Elkhart General Hospital has been providing comprehensive, advanced medical care to Elkhart and surrounding communities. It is a full-service, 367-bed, acute health care facility that serves more than 45,000 patients a month. The Elkhart General medical staff is comprised of more than 280 physicians representing 31 medical specialties, and over 1,600 employees serve in nursing, technical, administrative, and support capacities.

**Accreditations, Licensure and Membership**

- Accredited by Joint Commission on Accreditation of Healthcare Organizations
- Continuing Medical Education Accreditation by Indiana State Medical Association
- Licensed by the Indiana State Board of Health
- Member, American Hospital Association
- Member, Indiana Hospital & Health Association
- Member, VHA Tri-State
- Member, Indiana State Medical Association
- Member, The Elkhart Chamber of Commerce

**Facilities**

- Elkhart General Hospital  
600 East Boulevard  
Elkhart, IN 46514  
(219) 294-2621
- Elkhart General Hospital  
Goshen Campus  
2120 Rieth Boulevard  
Goshen, IN 46526
- Elkhart General Hospital Center for Behavioral Medicine  
500 North Nappanee St., Suite 4A  
Elkhart, IN 46514  
(219) 523-3347
- Elkhart General Home Care  
2020 Industrial Parkway  
Elkhart, Indiana 46516  
(219) 294-6181
- Elkhart General Home Care  
1509 South Main Street  
Goshen, Indiana 46526  
(219) 534-3718
- Elkhart General Home Care  
711 E. Colfax Avenue  
South Bend, Indiana 46617  
(219) 251-1070
- Elkhart General Home Medical Equipment  
2320 West Lexington  
Elkhart, Indiana 46516  
(219) 294-6181
- RiverPointe Medical Office Building  
500 Arcade Avenue  
Elkhart, Indiana 46514  
(219) 522-9505

**Annual Statistics**

	1999	2000
Hospital Admissions	14,865	15,284
Total Outpatient Registrations	129,502	146,323
Emergency Department Visits	36,703	37,613
Fastrak Urgent Care Visits	7,626	8,631
Behavioral Health Visits (Outpatient)	8,797	8,332
Behavioral Health Visits (Inpatient)	624	568
Home Care Admissions	4,268	3,186
Hospice Admissions	-	340
Total Inpatient Days	63,257	65,362
Average Length of Stay (incl. Rehab, TCU)	4.89	4.89
Outpatient Surgery Procedures	2,822	2,387
Total Surgical Procedures	6,120	5,839
Laboratory Procedures	431,868	453,737
Physical Therapy Procedures	60,201	60,523
Occupational Therapy Procedures	43,470	39,062
Speech Therapy Procedures	14,998	12,840
Respiratory Therapy Procedures	152,281	145,810
Radiology Procedures	93,598	110,794
Radiation Oncology Procedures	10,505	11,386
Cardiac Catheterizations	1,399	1,652
Cardiothoracic Surgeries	436	519
Units of Blood Donated	3,747	3,765
Births	1,918	1,989
Employees (FTEs)	1,574	1,626
Medical Staff Members	281	284
Volunteers	457	424
Volunteer Hours Worked	48,184	47,392

**Administration**

- Gregory W. Lintjer, President
- Wesley Davis, Executive Vice President
- Kevin Higdon, Vice President, Finance
- Terri Hilyard, Vice President, Nursing
- Kurt Meyer, Vice President, Human Resources
- Richard Jensen, Vice President, Physician Recruitment
- Jim Allyn, Vice President, Marketing and Community Relations



**Medical Staff**

By creating an environment of excellence supported by the latest medical technology, Elkhart General has attracted an extraordinary range of primary care physicians and specialists. More than 280 physicians representing 31 medical specialties comprise the Elkhart General medical staff.

**MEDICAL SPECIALTIES**

- Anesthesiology/Pain Management
- Cardiology
- Cardiothoracic Surgery
- Colon & Rectal Surgery
- Diagnostic Radiology
- Emergency Medicine
- Endocrinology
- Family Practice
- Gastroenterology
- Gynecologic Oncology
- Hematology/Medical Oncology
- Internal Medicine
- Neurological Surgery
- Neurology
- Neuroradiology
- Obstetrics & Gynecology
- Ophthalmology
- Oral & Maxillofacial Surgery
- Orthopaedics
- Otolaryngology
- Pathology
- Pediatrics/Neonatology
- Physical Medicine & Rehabilitation
- Plastic & Reconstructive Surgery
- Podiatry
- Psychiatry & Addictions
- Pulmonary Disease
- Radiation Oncology
- Radiology
- Rheumatology
- Surgery (General & Vascular)
- Urology

**Elkhart General Medical Staff (Active)**

**ANESTHESIOLOGY/PAIN MANAGEMENT**

- David A. Beatty, MD
- Gene W. Grove, MD
- Christian J. Losch, III, DO
- K. Gregory Lucchesi, MD
- Gregory S. Nowak, MD

- Benjamin S. Plotkin, MD
- Stephen Szydal, DO
- Gary R. Thomas, MD

**CARDIOLOGY**

- Joseph J. Covello, MD
- Luisito L. Gonzales, MD
- Farid Jalinous, MD
- Mark B. Lampert, MD
- Wai H. Lee, MD
- Marvin E. Mishkin, MD
- Raman L. Mitra, MD
- Thomas F. Nolan, MD
- Donald R. Westerhausen, MD

**CARDIOTHORACIC SURGERY**

- Paul S. Brown, MD
- Walter H. Halloran, MD
- Thomas A. Hughes, MD
- James P. Kelly, MD
- Charles J. Lamb, MD

**COLON & RECTAL SURGERY**

- Vincent C. Scuzzo, MD

**DIAGNOSTIC RADIOLOGY**

- Daniel A. Boll, MD
- John C. Collingwood, MD
- Gerard I. Duprat, MD
- Tim H. Emory, MD
- Alan B. Engel, MD
- James C. Field, MD
- Thomas J. Fischbach, MD
- Michael F. Grantham, MD
- John C. Hill, DO
- Michael R. Holt, MD
- Timothy D. Kadlecak, DO
- Allison M. Lamont, MD
- Russell B. Midkiff, MD
- Pedro A. Miro, MD
- Mark J. Ormson, MD
- Thomas E. Seiffert, MD
- Kevin M. Small, MD
- Jerrold A. Van Dyke, MD
- Michael M. Wheeler, MD
- Howard E. Wiarda, MD

**EMERGENCY MEDICINE**

- Michelle R. Bache, MD
- Bart R. Besinger, MD
- Margaret A. Brummer, MD
- Randall J. Cammenga, MD
- Cleveland C. Cleary, MD
- Dawn M. Detwiler-Berger, MD
- Eugene Huang, MD
- Bruce N. Hughes, MD
- Duane L. Miller, MD
- R. Bruce Newswanger, DO
- David W. Reser, MD
- John T. Rice, MD

**Continuing Medical Education**

Director Timothy Davis, M.D. (right) and Emergency Medicine

physician David E. VanRyn, M.D., work together in coordinating Elkhart General's Senior Elective Program for third- and fourth-year medical students from the Indiana University School of Medicine. In addition to providing programs for students, the Continuing Medical Education Program, which is accredited by the Indiana State Medical Association, provides monthly education opportunities for the medical staff.

- Brian K. Sloan, MD
- Daniel L. Sullivan, MD
- David E. Van Ryn, MD
- John H. Vandergrift, MD
- Sanjay Vasudeva, MD
- Doyle A. Yeager, MD
- Barbara L. Zimmerman, MD

**ENDOCRINOLOGY**

- E. Larry Knight, MD

**FAMILY PRACTICE**

- Robert M. Abel, MD
- Gerardo L. Baldassarri, MD
- Jack S. Bartoszek, DO
- Sam J. Borrelli, MD
- Joel A. Braunstein, DO
- Lori L. Checkley, MD
- Diane S. Cook, MD
- Jeffrey A. Eck, MD
- Fernando S. Escovar, MD
- Alvin R. Graber, MD
- John K. Graham, DO
- James R. Greenlee, MD
- John B. Guttman, MD
- Richard A. Hastings, MD
- Verlin T. Houck, MD
- Jeffrey S. Howe, MD
- Michelle R. Howe, MD
- Stephen D. Kennedy, DO
- Thomas M. Kolakovich, MD
- Frederick M. Krause, MD
- Robert D. Lee, MD
- Emma L. Long, MD
- Heather A. Macklem, MD
- Ryan D. Matherly, MD
- James R. Miller, MD
- Timothy J. Porsche, MD
- Elaine L. Shafer, MD
- Bethany VanderZwaag, MD
- Robert R. VanderZwaag, MD
- Harley W. Yoder, MD

**GASTROENTEROLOGY**

- Burton Boron, MD
- John Paul Karagiannis, MD

**GYNECOLOGIC ONCOLOGY**

- Michael Method, MD

**HEMATOLOGY/MEDICAL ONCOLOGY**

- Jose A. Bufill, MD
- William S. Kamanda, MD
- William D. Pletcher, MD

**INTERNAL MEDICINE**

- James V. Barnes, MD
- Minnie S. Enriquez, MD
- Steven A. Hanberg, MD
- John A. Hawkins, MD
- Carolyn F. Hudson, MD
- Vincent K. Knight, MD

**Continuing Medical Education**

- George A. Mark, MD
- D. Thomas Mellin, MD
- Geoffrey A. Rogers, MD
- John C. Sorg, MD

**NEUROLOGICAL SURGERY**

- Peter M. Carney, MD
- Joseph B. Schnittker, MD

**NEUROLOGY**

- James R. Miller, III, MD
- Patrick W. Russell, DO
- Thomas R. Vidic, MD

**OBSTETRICS & GYNECOLOGY**

- Jeffrey L. Cain, MD
- Timothy A. Delehanty, MD
- Starla D. Graber, MD
- Claude E. Hartman, MD
- Stephen P. Hollenberg, MD
- James P. Mauck, MD
- Rosalie L. McBride, MD
- Martina G. McGowan, MD
- Gregory M. Mielke, MD
- Timothy E. Morgan, MD

**ORAL & MAXILLOFACIAL SURGERY**

- Wilber C. Boren, DDS
- Daniel A. Burns, DDS
- David M. Fairchild, DDS
- Jeffrey S. McBride, DDS

**ORTHOPAEDIC SURGERY**

- David A. Cutcliffe, MD
- Robert K. Ellis, MD
- Craig W. Erekson, MD
- John M. Graham, DO
- Michael J. Hartman, MD
- Joseph M. Janzer, DO
- Leonard J. Kibiloski, MD
- Mark A. Klaassen, MD
- Gregory A. Peyer, MD
- Louis C. Sfreddo, MD
- Scott J. Trumble, MD

**OTOLARYNGOLOGY**

- (EAR, NOSE, & THROAT)
- Craig E. Meyer, MD
- Kathryn L. Press, MD

**PATHOLOGY**

- Alfonso Cardenas, MD
- Francisco A. Deogracias, MD
- Luis N. Galup, MD
- Nita R. Gerig, MD
- Rick L. Hoover, MD
- Lawrence K. Hussey, MD
- Kristen M. Jacobs, MD
- David L. Jentz, MD
- William J. Kaliney, MD
- C. Kurtis Kim, MD
- Joseph A. Prahlow, MD

- Bobbie C. Sutton, MD
- Robert J. Tomec, MD

**PEDIATRICS/NEONATOLOGY**

- Mabel A. Blunk, MD
- Edward A. Gergesha, MD
- Sandra H. Morgan, MD
- Omobola A. Olaniyan, MD
- James A. Peterson, MD
- Cynthia A. Thorne, MD
- Lynnette M. Valentijn, MD
- Roger J. VanOrsdoll, MD

**PHYSICAL MEDICINE & REHABILITATION**

- Kurt W. Graham, MD
- Todd A. Graham, MD

**PLASTIC & RECONSTRUCTIVE SURGERY**

- Ronald K. Downs, MD
- Patrick J. Viscardi, MD

**PSYCHIATRY & ADDICTIONS**

- Timothy E. Davis, MD
- Douglas L. Jarvis, DO
- Scarline M. Jerome-Kon, MD
- David O. Taylor, MD

**PULMONARY DISEASE**

- Kenneth L. Gammon, MD

**RADIATION ONCOLOGY**

- Marc T. Fields, MD
- David A. Hornback, MD
- Nina F. Johnson, MD
- Russell F. Johnson, MD

**RADIOLOGY**

- Alphonse H. Harding, MD
- Karl W. Schultz, MD

**RHEUMATOLOGY**

- Bruce A. Lockwitz, MD

**SURGERY (GENERAL & VASCULAR)**

- George M. Brennan, MD
- James D. Finrock, MD
- Kirby R. Gross, MD
- Steven M. Hoekstra, MD
- Jeff A. Mark, MD
- Michael C. Rotkis, MD

**UROLOGY**

- Jerald A. Hochstetler, MD
- N. Stacy Lankford, MD
- Michael H. Thomas, MD

Elkhart General Hospital belongs to the people it serves. A 17-member Board of Directors, who serve without pay, guides the system in its mission to provide high quality, affordable health care to the communities it serves. The Board's role includes guaranteeing fair and equal access, approving new medical staff members, and approving long-term strategies for the continued success of the hospital.

2000/2001 Board of Directors



Karen Thomson  
Chairman of the Board



Jeff Wells  
First Vice Chairman



James Hiatt  
Second Vice Chairman



Rand Nilsson  
Secretary



James E. Pettit  
Treasurer



Larry Banghart



Curtis Brown



Robert J. Deputy



Craig Fulmer



E. Larry Knight, MD



Gregory Lintjer



Alice Martin



David Perkins



Michael Thomas, MD



David E. Van Ryn, MD



Scott Welch



John M. Wolf

Throughout the 100-year history of Elkhart General Hospital, generous Elkhart County donors have contributed millions of dollars to the hospital because they recognized the importance of having high quality health care, close to home. This commitment has allowed us to further our mission and maintain a modern, well-equipped hospital, staffed by highly qualified medical professionals. Community support from 2000 donors (listed on this page) was invaluable and the Elkhart General Board of Directors and Elkhart General Foundation are truly grateful for their generosity.

**2000/2001 Board of Directors**

- Glenn Banks
- A.L. Bias
- Thomas Dushimer
- Richard Jensen
- E. Larry Knight, MD
- Gregory Lintjer
- Frank Martin
- Lee Martin
- James McNamee
- Richard Treckelo
- Jeffrey Wells

Arthur J. Decio  
President



**Auxiliary**

With nearly 500 members, the Auxiliary reflects the close bond that exists between Elkhart General and the community. These hardworking volunteers bring an “extra dimension” to the caring atmosphere at the hospital, while also coordinating major fundraising efforts that enhance its programs and technologies.

Auxiliary President Linda Olenczuk (shown above) led the charge of 424 volunteers in 2000 who contributed 47,392 hours and more than \$137,000 dollars to Elkhart General and the patients it serves. This year’s contributions helped purchase a state of the art Mammotome Breast Biopsy System.



- Mr. & Mrs. Filiberto Anastasio
- Bank One Corporation
- Ms. Elvira Barnes
- Mr. Robert Barnes
- Ms. Shirley Barnes
- Jack Bartoszek, DO
- Roy L. Beck
- Roy L. Beck, Jr.
- Dr. & Mrs. James Benson
- Dr. & Mrs. Elmer R. Billings
- Mr. & Mrs. Norman Bingham
- Mr. & Mrs. William Bissell
- Mr. & Mrs. James Bock
- Ms. Susan Boese
- Mr. & Mrs. Edward J. Bollero
- Dr. & Mrs. Wilber Boren
- Wilbur H. Budd
- Ms. Patty Campanello
- The Cartwright Foundation
- Community Foundation of St. Joseph County
- Ms. Alice Craven
- Frederick K. Dean, MD
- The Arthur J. Decio Foundation
- Mr. & Mrs. John DeWees
- Dr. & Mrs. Edward G. Dovey
- Elkhart General Foundation
- Elkhart General Rehabilitation Services
- Elkhart Hospice Fund, Inc.
- Mr. & Mrs. Tim Emmendorfer
- Dr. & Mrs. T.H. Emory
- Dr. & Mrs. Alan Engel
- Ms. Lorraine Erbe
- Fairmont Homes
- J.D. Finfrock, MD
- Ms. Agnes Fowler
- L. Craig Fulmer
- Marian F. Futter Trustee
- Ms. Maxine Futter
- G. Beach Gattman, MD
- Mr. & Mrs. Kevin Gerring
- Dr. & Mrs. Al Harding, III
- Mr. & Mrs. John Hart
- Mr. & Mrs. Morris Hester
- Dr. & Mrs. W.A. Himmelsbach
- Homan Lumbar Mart
- Dr. & Mrs. Lawrence Hussey
- IBM Corporation
- Dr. & Mrs. John Ivy
- Mr. & Mrs. Richard Jensen
- Mr. & Mrs. John Jessen, Sr.
- Mr. Keith Juday
- Mr. & Mrs. Robert Judson

**2000 Contributors**

- Forest M. Kendall, MD
- Dr. & Mrs. E. Larry Knight
- Mr. & Mrs. Harold Kuhn
- Dr. & Mrs. N. Stacy Lankford
- Mr. & Mrs. Terrance L. Lindberg
- Mrs. Janice A. Lohman
- Dr. & Mrs. Christian Losch
- Mr. & Mrs. Stephen Lutz
- Mr. & Mrs. John Maisel
- Mr. & Mrs. Lee Markel
- Dr. & Mrs. Jeffrey McBride
- Mr. & Mrs. Ward Merchant
- Middlebury Graphic Arts
- Middlebury Fire Department
- Dr. & Mrs. William H. Miller
- Dr. & Mrs. James Miller
- M.E. Mishkin, MD
- Mr. & Mrs. Joseph Overhulser
- Dr. & Mrs. Frank Pairitz
- Dr. & Mrs. Aris Papadopoulos
- Radiology, Inc. Foundation
- Mr. & Mrs. Norman Reedy
- James S. Reiff, DO
- Mr. & Mrs. Robert Richardson
- Ms. Florence Richardson
- Mr. & Mrs. Joseph Robinson
- Ms. Doris A. Rupe
- Mr. & Mrs. David Rutter
- Mr. & Mrs. Gerald Shank
- Straight A Cuts
- Mr. & Mrs. Kenneth Stuff
- Earl Swenson Associates, Inc.
- Mr. & Mrs. L.J. Swift
- Mr. & Mrs. George Thomas
- Michael H. Thomas, MD
- Ruth V. Thunander Revocable Trust
- Mr. & Mrs. Kenneth Timpe
- Anne & Richard Treckelo
- Mr. & Mrs. Richard Trippel
- Mr. & Mrs. James Troup
- Mr. & Mrs. Jerold Van Dyke
- Mr. & Mrs. Richard Warnick
- Walter and Madelon Wells Charitable Trust
- Mr. & Mrs. David White
- Ms. Virginia Wildig
- Mr. & Mrs. George Williams III
- Mr. & Mrs. Gordon Zimmer

**Hospice is supported in its work by the generous contributions of**

Dealing with the needs of a family member or other loved one with a life-threatening illness is one of the most difficult challenges anyone could face. Elkhart General Community Hospice provides services to patients and families in this situation in a manner that is honest, simple, and life-affirming. Hospice is about life. It is about ensuring that patients live as fully as possible in their last months or weeks. It is about helping family members through this trying time and through the grieving process that follows. These were the goals of Elkhart Community Hospice when it became part of Elkhart General in the spring of 1999, and those remain the goals today.

The hospice staff includes registered nurses, social workers, clergy, certified nursing assistants and specially trained volunteers. Services are provided in the place of residence and help is never more than a phone call away. In the year 2000, the Hospice team served 340 patients and their families in Elkhart, LaGrange, St. Joseph, Kosciusko and Marshall counties in Indiana, and St. Joseph, Cass, and Berrien counties in Michigan.

Hospice is supported in its work by the generous contributions of many people throughout Michiana.



16



In three separate inspirational and educational programs for Michiana physicians, clergy, nurses, and other caregivers, Nicholas Christakis, MD, PhD, Associate Professor of Medicine at the University of Chicago Medical Center, discussed end-of-life issues with particular emphasis on the role of hospice. Dr. Christakis is author of "Death Foretold: Prophecy and Prognosis in Medical Care." Presented in the Elkhart General Auditorium, the seminar was sponsored by Robert Richardson in memory of Beverly Richardson.

**Professional Advisory Committee  
Elkhart General Community Hospice**

The Professional Advisory Committee reviews and advises Hospice management concerning scope of services, admission and discharge, medical supervision, plans of care and other important policies.

- |                       |                         |
|-----------------------|-------------------------|
| Carol Eldridge        | Terri Hilyard           |
| Terri Friedauer       | Rev. Gene Hollingsworth |
| Pam Frye              | Beth Hostetler          |
| Kenneth Gammon, MD    | Beth A. Keultjes        |
| Pam Green             | Cindie McPhie           |
| Joseph Gross          | Thomas Mellin, MD       |
| Elaine Hagan          | Sue Morgan              |
| Steven A. Hanberg, MD | Shelby Morse            |

## Elkhart General Community Hospice Donor List 2000

many people throughout Michiana.

Dr. & Mrs. Robert Abel	Bayer Corporation	Mr. & Mrs. Edward Bollero	Chiphone Federal Credit Union	Mrs. Nancy Davis
Mrs. Christy Adams	Mrs. Thelma Baylor	Mrs. Mary Bond	Mrs. Shirley Chomer	Ms. Vicki Davis
		Mr. & Mrs. David Bonfiglio	Mrs. Sally Christeon	Mr. & Mrs. Wesley Davis
		Mr. Clell Bontrager	Mr. & Mrs. James Christophel	Ms. June Deal
Ms. Judith Adams	Mr. Joseph Bean	Dr. & Mrs. Wilbur Boren	Mrs. Rita Chute	Dr. Frederick Dean
Mrs. Barbara Adcock	Mrs. Jane Beatty	Mr. Joseph Borkholder	Ms. Hazel Clainin	Dec-O-Art, Inc.
Admat Manufacturing Incorporated	Mrs. Heidemarie Becher	Mrs. Eleanor Borneman	Ms. Eileen Clark	Ms. Judith Deek
Adorn, Inc.	Mr. Roy Beck	Mr. Harold Borneman	Clark Retail Interprise # 1360	Mr. & Mrs. Larry DeFord
Air Maps, Inc.	Ms. Betty Beckford	Ms. Nicole Borosh	Mr. James Claussen	Mrs. Phyllis Defrees
Mrs. Mary Airgood	Ms. Shirley Beehler	Mrs. Julie Botchuck	Ms. Betty Clementz	Mrs. Julie Defreese
Ms. Ruth Alexander	Ms. Geraldine Behselich	Mrs. Beverly Boughner	Ms. Elizabeth Cole	Del, Inc.
Mrs. Alice Allen	Mrs. Gail Bellisle	Mrs. R.M. Boyd	College Mennonite Church	Mr. & Mrs. Lawrence Deputy
Mr. James Allyn	Ms. Rose Benjamin	Mr. Raymond Bray	Mrs. Barbara Collier	Mrs. Shirley Desantis
Alpha RHO Chapter	Bent Oak Corporation	Mrs. Frances Brennehan	Community Wide Federal Credit Union	Mrs. Tracy DeShone
Mrs. Elaine Ambrose	Mardell J. Berger	Ms. Mary Bresler	Mr. Anthony Companion	Ms. Mary Ellen Dettweiler
Mrs. Justine Andersen	Ms. Virginia Berger	Mr. Ben Brewers	Compass Financial Advisors, Inc.	Mr. & Mrs. John DeWees
Ms. Felicia Anderson	Ms. Mary Berkshire	Mrs. Patricia Bricker	Ms. Hazel Conine	Mrs. Barbara Dills
Mrs. Frances Anderson	Mrs. Alice Berry	Ms. Marilyn Brickey	Mrs. Duane Conrad	Mrs. Nancy Dion
Mrs. Margo Anderson	Beta Chi Sorority	Mrs. Tricia Brickner	Mr. Carl Cook	Diversified Metal Sales, Inc.
Mr. & Mrs. Marlyn Andre	Mr. Gerald Betley	Ms. Hazel Brissette	Ms. Connie Cook	Mrs. Arlene Doering
Mrs. Sherrol Andrews Dodson	Mrs. Angela Beverly	Mrs. Judith Brothers	Ms. Rebecca Cook	Mrs. Joan Doering
Mrs. Sharon Anglemeyer	Mrs. Norma Bevilhymmer	Ms. Marjorie Brown	Ms. Sheila Cook	Mr. Max Doering
Arbogast Foundation	BGH Group	Ms. Marna Brown	Cook Heating & Air Conditioning Co., Inc.	Don Bradshaw Construction, Inc.
Ms. Marilyn Argenta	Ms. Angeline Bibbo	Mrs. Olga Brown		Mrs. Jeanette Donnell
Ms. Joanne Arisman	Ms. Sharon Bibeau	Ms. Carol Brownsberger	Mr. Mark Cooke	Dorothy Geyer Trust
Mrs. Kate Arko	Mr. John Bickart	Mr. & Mrs. Dean Brubaker	Mrs. Judy Coomer	Ms. Laura Doty
Mrs. Janet Arnold	Mr. Arthur Bickel	Mrs. John Brumbaugh	Ms. Pauline Cooper	Mr. Douglas Dowley
Artisan Interiors, Inc.	Ms. Carol Bickel	Mrs. Edythe Buchwald	Mr. Selwyn Copeland	DRM Enterprises, Inc.
Mrs. Sandy Artley	Mrs. Linda Bickel	Mr. GlenBurdick	Mr. Spencer Corliss	Mrs. Florence Drumhiller
Mr. Thomas Artley	Dr. Alan Bierlein	Mrs. Joan Mary Burkett	Mr. & Mrs. Keith Corson	Mrs. Joanne Dugle
Mr. David Ashby	Ms. Deborah Bigler	Ms. Wanda Burkholder	Mr. & Mrs. T.H. Corson	Ms. Diana Duncan
Ms. Ruth Ashby	Mrs. Frances Billet	Mrs. Rebecca Burns	Mrs. Anita Costin	Mr. & Mrs. Gordon Duncan
Mr. Harold Atkins	Billings Funeral Home, Inc.	Mrs. Susan Burns	Ms. Mina Costin	Mrs. Wendy Duncan
Mr. & Mrs. Daniel Atkinson	Mrs. Lorraine Billisitz	Mrs. Helen Bushong	Mrs. Lucille Cotter	Mrs. Mary Dunham
Mrs. Dee Atkinson	Mrs. Alice Binkley	Ms. Viola Byington	Mrs. Teresa Covey	Mrs. Daina Durham
Mrs. Melanie Atkinson	Ms. Helen Binkley	Ms. Josephine Byron	Mr. Michael Cox	Mr. & Mrs. Thomas Dusthimer
Atlas Die, Inc.	Bish Excavating Co.	C.L. Building & Leasing, Inc.	Mrs. Monica Crase	Ms. Sherrill Duzy
Mrs. Mary Backert	Mrs. Dorothy Bishop	Ms. Angela Camarata	Cressy & Everett, Inc. Realtors	Ms. Barbara Dygulski
Mr. Ora D. Baer	Mrs. Gloria Blake	Ms. Carol Cameron	Mr. Dale Crist	Ms. Sharon Eaton
Mrs. Ingeborg Bailey	Mr. Ronald Blake	Mrs. Rhonda Camfield	Mrs. Robin Crouch	Mr. Glen Eby
Mr. Tennis Bailey	Ms. Patricia Blenner	Mrs. Patty Campanello	Mrs. Martha Culp	Mrs. M. Marie Eckhart
Ms. JoanBails	Mrs. Margaret Bloczynski	Cardiothoracic Surgery P.C.	Ms. Miriam Cummins	Mrs. Virginia Edmondson
Mrs. Mindi Bair	Mrs. Ru Bloxson	Ms. Mary Caretti	Ms. Linda Cunningham	Mr. Harold Eggleston
Mr. Robert Baker	Mrs. Doris Blue	Mr. Dan Carlson	Mr. & Mrs. Thomas Cutler	Mrs. Sandra Ehrenberg
Bank One Corporation	Mrs. Laverne Blue	Ms. Alice Carpenter	Mrs. Frances Dallmann	Mr. George Elenbaas
Ms. Sheila Bardwell	Dr. Mabel Blunk	Mr. Lawrence Cascino	Ms. Mildred Dalrymple	Elkhart Conservation Club
Ms. Shelley Bardwell	Mr. & Mrs. James Bock	Mrs. Jane Cerney	Ms. Carole Darr	Elkhart General Healthcare System
Ms. Lynne Ann Barker	Mrs. Cynthia Boesler	Charleston Radiologists PA	Ms. Katherine Davies	Mr. & Mrs. Tom Elkin
Mrs. Treva Barron	Mr. Robert Boguslaski	Ms. Carla Chester	Mr. & Mrs. H. Coleman Davis	Ms. Violet Elliott
Mr. Stuart Basquin	Ms. June Bole	Ms. Annette Chiddister	Mrs. Kathy Davis	Ms. Sally Ellis
Mrs. Bonnie Baute	Mrs. June Bolinger	Mr. & Mrs. Stephen Chilcote	Mrs. Mary Davis	Mrs. Linda Emerson

## Elkhart General Community Hospice Donor List 2000

Mrs. Anna Belle Emmert	Ms. Eileen Geller	Mrs. Anna Marie Hall	Mrs. N. Lia Hood	Ms. Karen Keck
Dr. & Mrs. T.H. Emory	Mrs. Sondi Geminder	Mrs. Betty Hall	Hoosier Racing Tire	Mrs. Suzanne Keene
Ms. Shiela Enyeart	Mr. John Gemmer	Dr. Walter Halloren	Mrs. Jean Hoover	Ms. Betty Kegerreis
Mrs. Marcia Epper	Mr. Darwin Getz	Ms. Elaine Hanak-Hall	Mr. Samuel Hoover, Jr.	Mrs. Judith Keil
Ms. Barbara Evans	Mrs. Dorothy Geyer	Ms. Esther Haney	Ms. Jane Hostetler	Mrs. Helen Keller
Ms. Irma Evans	Ms. Gwen Gildea	Mr. James Hanley	Mr. & Mrs. Jerry Hostetler	Mr. Dean Kelly
Ms. Ruth Evans	Mrs. Sandra Giles	Mrs. Christine Hanna	Ms. Becky Hourigan	Ms. Linda Kershner
Mr. Lewis Evers	Mr. Donald Gingerich	Mr. Al Harding III	Ms. Georgia Housour	Mr. & Mrs. Joseph Keultjes
Ms. Anna Fair	Mr. & Mrs. William Gipson	Mrs. Joyce Hargrove	Mrs. Bess Howard	Key Trust Company
Mrs. Alice Fairfield	Mr. & Mrs. Edward Girton	Mrs. Willetta Harper	Mr. Jerry Huffer	Ms. Christine Kidd
Ms. Dorothy Faith	Mrs. Marjorie Glanders	Mrs. Sara Hart	Ms. Juanita Huitema	Mrs. Carole Kiebel
Ms. Cheryl Farmer	Mrs. Dorothy Glasgow	Mrs. Ingrid Harter	Mrs. Bernice Hummel	Ms. Kathleen Kielce
Ms. Mary Fedderson	Ms. Mary Glasow	Mrs. Eleanor Hartman	Mrs. Joyce Hummel	Mr & Mrs. Gary Kilmer
Mrs. Kimberly Fiant	Mrs. Nancie Glasow	Mrs. Carl Hartup	Ms. Jonelle Hutchens	Ms. Eloise Kimes
First Community Federal Credit Union	Ms. Debbie Godfrey	Mr. Thomas Harvey	Hydro Life, Inc.	Mrs. Jean Kimes
First Congregational Church	Ms. Elsie Good	Mrs. Pauline Haut	Mrs. Kimberly Ingle	Mrs. Janene Kindy
First Source Bank	Mr. William Goodsene	Mr. & Mrs. William Haut	Mrs. Betty Ingram	Ms. Nora King
Ms. Beverly Fisher	Mrs. Grace Goorhouse	Havel Bros.	Italian-American Relief Association	Mrs. Rose King
Ms. Betty Foltz	Goshen High School, Class of 1946	Dr. & Mrs. John Hawkins	J.N.K., Inc.	Mrs. Louise Kirk
Mrs. Dorry Foltz	Mrs. Elizabeth Goss	Mrs. Judith Hawkins	Mrs. Charles Jackson	Mr. & Mrs. Duane Kirkdorfer
Formco, Inc.	Ms. Gretchen Goss	Mrs. Mary Hawkins	Mrs. Helen Jarowyi	Mrs. Jeanette Kirkdorffer
Mr. David Fox	Dr. & Mrs. Alvin Graber	Mrs. Doris Hayes	Mr. & Mrs. Richard Jensen	Mrs. Christine Klein
Mr. & Mrs. Robert Foyle	Mr. Theodore Gramals	Mr. Randall Hayes	Jerry Baker Gardening Club of East Lake Estates	Mrs. Joyce Klein
Mrs. Dianne Frandsen	Mrs. Lois Gratzol	Hayes Lemmerz	Ms. Kay Jessup	Mrs. Lowell Kline
Franger Gas Co., Inc.	Mrs. Virginia Gravender	Ms. Angela Heffner	Mr. Richard Jimison	Mr. Lyle Kline
Mrs. Stella Frazier	Ms. Kathleen Gray	Ms. Leona Heinrich	John Harman - Attorney at Law	Ms. Nancy Kline
Mr. John Frederick	Mrs. Joyce Graybill	Mrs. Nina Heminger	Mrs. Brenda Johnson	Mrs. Sherry Kobie
Mr. Richard Frederick	Great Race, Inc.	Ms. Helen Henderson	Mr. Jerry Johnson	Mrs. Ann Koch
Frederick Tool Corporation	Erin Green	Mrs. Benitta Herman	Mr. Larry Johnson	Ms. Marilyn Kohler
Ms. Jeanne Frederickson	Ms. Pam Green	Ms. Pamela Heron	Mrs. Mary Johnson	Mr. Aram Koltookian
Mrs. B. Jean Freeby	Green Family	Mrs. Diana Hess	Mr. Ralph Johnson	Mrs. Linda Kooiman
Dr. & Mrs. George Frey	Mrs. Patricia Greener	Ms. Dorothy Heystek	Mrs. Robert Johnson	Mrs. Mary Ellen Koons
Ms. Elizabeth Frick	Mrs. Margaret Grieb	Mrs. Barbara Hicks	Mr. Sonny Johnson	Koons & Koons
Mr. Jack Friedman	Mrs. Arthur Griffin	Mr. & Mrs. Kevin Higdon	Mr. Joseph Johnson	Mrs. Marilyn Kowalczyk
Mrs. Adelaide Fry	Ms. Diana Gross	Mr. & Mrs. Terry Hilyard	Ms. Delores Jones	Mrs. Marjorie Krallman
Ms. Cheryl Fry	Mr. John Grove	Mr. W.A. Himmelsbach	Mrs. Janis Jones	Mrs. Patricia Kronewitter
Mr. James Fuller	Mr. & Mrs. Oscar Grove	Mrs. Karla Himschoot	Mrs. Mary Jordan	Ms. Dorothy Krueger
Ms. Barbara Fult	Ms. Lisa Guerra	Mrs. Marceta Hinkle	Mrs. Dorothy Kanode	Ms. Ida Kruis
Mr. Robert Gadomski	Ms. R. Kathleen Gurka	Mrs. Jeralyn Hisey	Mrs. Doris Karenke	Ms. Phyllis Kuboske
Ms. Betty Galbreth	Mrs. Stanley Gurka	Mr. David Hitch	Mrs. Mary Kasa	Ms. Michele Kustron
Mr. Ronald Gall	Ms. Rebecca Gute	Hi-Tech Housing, Inc.	Mrs. Doris Karenke	Mrs. Gladys LaCounte
Gamma Associate Chapter of Kappa Kappa Kappa Inc.	Mrs. Betty Guthrie	Mrs. Maxine Hoagland	Ms. Mary Kasa	Mrs. Sarah LaCounte
Dr. Kenneth Gammon	Ms. Jean Guzman	Ms. Ruth Hobbs	Kash Management & Investments	Mrs. Julia Lacy
Mr. Wilferd Ganshorn	Mr. & Mrs. Erwin Haase	Mrs. Lisa Hoch	Mrs. Sandra Katzel	Mrs. Colleen Laidlaw
Mrs. Sue Gantt	Mr. Chris Habegger	Mrs. Helen Hoff	Mr. Frances Kauffman	Mr. & Mrs. John Laidlaw
Mrs. Denise Gardner	Ms. Christine Habegger	Ms. Jenny Holdgrafer	Ms. Jane Kauffman	Lake County Minority Health Coalition
Mr. Max Garl	Ms. Hilda Hahn	Mr. Kenneth Holdread	Mrs. Joy Kauffman	Mr. Michael Landis
Ms. Joyce Gaskin	Mrs. Mildred Hahn	Ms. Annabelle Hollar	Ms. Kathleen Kauffman	Mrs. Anne Landrum
Mrs. Mayme Gatewood	Ms. Peggy Hahn	Rev. Gene Hollingsworth	Mr. & Mrs. Jim Kavar	Dr. & Mrs. Jeffry Landrum
Mrs. Inez Gearhart	Ms. Doris Hale	Mrs. Ann Holt	Mr. & Mrs. Gary Keaffaber	Dr. & Mrs. Stacy Lankford
Mrs. Barbara Geller	Mrs. Mary Ellen Halicki	Mrs. Alice Holtz	Mr. & Mrs. Gary Keck	Mrs. Monica Lantz
		Mr. Randy Holtzinger		

Mrs. Laverle Larimer	Mrs. Betty Mast	Monaco Coach Corporation	Ms. Sandra Oakley	R.J. Reese & Associates, Inc.
Mrs. Ruth Larimer	Mr. Gerald Mast	Mr. Ralph Montagano	Mr. William O'Brien	Mrs. June Radecki
Mrs. Barbara Larsh	Mrs. Janet Mast	Mr. Ralph Montagano, Sr.	Ms. Delenne O'Connor	Radiology, Inc. Foundation
Mr. James Lau	Mr. Tom Mast	Mr. Bob Moody	Mr. & Mrs. Edward Ogle	Mrs. Mary Rasp
Ms. Marquerite Lauzon	Mrs. Rose Ann Matousek	Mr. E.W. Morack	Old Oak Sheep Farm	Mrs. Shirley Rassi
Mrs. Linda Leatherman	Mr. Douglas Mattix	Ms. Suzanne Morgan	Mrs. Jolene Olds	Dr. Robert Raymond
Mrs. Nancy Leatherman	Ms. Barbara McArthur	Drs. Timothy & Sandra Morgan	Ms. Mary Olds	Mrs. Janet Reed
Mrs. Jane Lechlitner	Mrs. Becky McClelland	Mr. & Mrs. Tom Morse	Patsy Ollis	Mr. Norman Reed
Mr. Sanford Lehman	Ms. Klothilde McClure	Ms. Kathy Morton	Mr. Mark Ormson	Mr. James Rees
Mr. Lowell Lerner	Mrs. Gloria McCorkel	Mr. David Moss	Mrs. Maxine Orosz	Mrs. Marjorie Reese
Mrs. Sara J. Levitz	Mrs. Connie McCoy	Mr. Cynthia Motta	Mr. Charles Orth	Mrs. Ramona Reichard
Ms. Barbara Lewallen	Ms. Irene McCreary	Ms. Jane Mowrer	Mrs. Frances Osowski	Mrs. Evelyn Reim
Mr. Richard Lewallen	Mr. Thomas R. McFall	Mrs. Betty Murphy	Ms. Pamela Ostrander	Ms. Nancy Renaud
Mrs. Tina Liles	Mrs. Wanetta McFall	Ms. Debra Murphy	Ms. Janet Ostrom	Mr. Virgil Rennaker
Mr. Robert Lindgren	Mr. & Mrs. Keith McFarren	Ms. Miriam Murphy	Mr. James Otto	Mrs. Peggy Replogle
Mrs. Patricia Link	Ms. Ann McIntire	Mrs. Betty Murray	Mr. & Mrs. John Overhiser	Mrs. Nancy Reynolds
Mr. & Mrs. Gregory Lintjer	Mrs. Gertrude McIntyre	Mr. & Mrs. Thomas Murto	Ms. Anne Overmyer	Mrs. Cynthia Rhea
Mrs. Lynn Linton	Ms. Suzanne McIntyre	Ms. Joan Myatt	Ms. Dorothy Overpeck	Ms. Joan Rhea
Lions Club of Dunlap, Inc.	Mr. J.M. McKenna	Mrs. Gina Myers	Ms. Betty Overton	Mrs. Paige Rheinheimer
Little Lamb Day Care Center	Mr. & Mrs. George McMeekan	Ms. Jean Myers	Ms. Renee Page	Ms. Lisa Rhinesmith
Mrs. Patricia Livingston	Mrs. Florence McPhee	Mrs. Lawrence Myers	Mrs. Karen Palmer	Ms. Lois Richards
Local 9 UAW	Mr. & Mrs. Keith Meade	Ms. Lydia Myers	Mr. & Mrs. Doug Parcell	Mr. Charles Richards
Ms. Beatrice Long	Mrs. Lola Mellinger	Mr. & Mrs. Max Myers	Ms. Carol Parker	Mrs. Florence Richardson
Mrs. Betty Lorenz	Mrs. Peggy Mellish	Mrs. Martha Mynsberge	Ms. Penny Passenger	Mr. Robert Richardson
Dr. & Mrs. Christian Losch	Mr. Fred Menchinger	Nacogdoches Sheet Metal and Plumbing	Patriot Homes, Inc.	Mrs. Ann Rick
Mrs. Brenda Losee	Mr. & Mrs. Ward Merchant	Mrs. Georgia Lee Nave	Mrs. Cathryn Patterson	Mr. James Rieckhoff
Mrs. Carol Loucks	Mrs. Leola Merillat	Ms. Patty Neimann	Mr. John Patterson	Mrs. Cleta Rieth
Mrs. Carol Love	Mr. & Mrs. Kurt Meyer	Ms. Martha Nelson	Ms. Barbara Pearre	Rieth-Riley Construction Co., Inc.
Ms. Jo Lovette	Michiana Searches, Inc.	Mrs. Lois Nelson	Pebblestone Villas Homeowners Association	Mr. Brian Riley
Ms. Janice Luckenbill	Mrs. Margaret Milanese	Mrs. Carol Nemeti	Mrs. Vivian Pell	Mrs. Carolyn Riley
Ms. Esther Lunger	Mrs. Mary Milem	Mrs. Jeanne Nesbitt	Mrs. Janet Pellus	Ms. June Rinehart
Mr. Robert Lydon	Ms. Ruth Miles	Ms. Donna Newland	Mrs. Jane Perez	Mr. & Mrs. Adrien Ringuette
Mr. Raymond Lyon	Mrs. Dorothy Miller	Ms. Judith Newton	Mrs. Barbara Peterman	Mr. & Mrs. John Ritchie
Ms. Thalia Mack	Dr. & Mrs. Duane Miller	NIBCO, Inc.	Mr. & Mrs. Steven Peterson	Riverside Bible Church
Ms. Clara Macumber	Mr. Frank Miller	Ms. Carol Nickel	Mrs. Bernice Pettifor	Riverside Terrace Association
Mrs. Eva Macumber	Ms. Jacquelyn Miller	Mrs. Cynthia Nickell	Pilgrim Rest Missionary Baptist Church	Mr. Warren Robbins
Mrs. Johanna Macumber	Dr. & Mrs. James Miller	Mr. David Nicoson	Mrs. Darlene Pirtle	Mrs. Deborah Robinson
Mrs. Eloise Major	Ms. Joy Miller	Mrs. Debra Nielsen	Ms. Sharon Pittenger	Ms. Helen Robinson
Ms. Julie Maloy	Ms. Lynn Miller	Mr. & Mrs. Rand Nilsson	Ms. A. Irene Pletcher	Ms. Linda Robinson
Mr. Joseph Manfredi	Mrs. Norma Miller	Mrs. Dianne Noffman	Mrs. Jan Pletcher	Mrs. Bernadine Rodgers
Mrs. Beth Mankowski	Mrs. Peggy Miller	Mrs. Carol Noffsinger	Ms. Nancy Pletcher	Mr. & Mrs. Terry Rodino
Ms. Judy Mann	Ms. Phyllis Miller	Mr. James Noffsinger	Mrs. Carol Pontius	Mr. David Rogers
Mr. Leslie Marjason, Jr.	Mrs. Rosemary Miller	Mrs. Miriam Nolan	Mrs. John Poorbaugh	Mrs. Diana Rogers
Mr. & Mrs. William Marohn	Mr. Warren Miller	Mrs. Marguerite Nommay	Ms. Connie Postelli	Mr. Bryce Rohrer
Ms. Doris Marr	Miller's T.V.	North American Land Development Company, Inc.	Mr. & Mrs. Kimball Pratt	Mrs. Martha Romine
Married Women's Club of YWCA	Ms. Nancy Mills Holt	North End Cycle Shop, Inc.	Mrs. Betty Pressler	Ronald Matthys Farms
Ms. Elizabeth Marshall	Mrs. Kim Minder	Mr. Lane Northam	Mrs. Carolyn Price	Mr. Edward Rooker
Mrs. Amy Martin	Mr. & Mrs. Raymond Minegar	Northwest Interiors, Inc.	Mrs. Jill Price	Mrs. Kelly Ropp
Mr. & Mrs. John Martin	Mrs. Marietta Mishler	Mr. & Mrs. Thomas Nufer	Mr. Frank Pugliese	Mrs. Joanne Rose
Ms. Muriel Martin	Ms. Joyce Mitchell	Mr. & Mrs. Fred Nusbaum, Sr.	Mr. Daniel Purvis, Sr.	Mrs. Diana Roth
Mrs. Maria Massey	Modem Technologies Group, Inc.		Mr. Robert Pyle	Ms. Myrtle Roth

## Elkhart General Community Hospice Donor List 2000

Mr. & Mrs. Robert Roth	Mr. Howard Smith	Mrs. Joan Tacy	Ms. Theda Vosberg	Ms. Betty Wilcoxson
Mrs. Margaret Rowland	Mrs. Myrtle Smith	Ms. Beatrice Tarara	W.F. Lilly & Co.	Ms. Myrtle Wilhoite
Mrs. Vicki Ruff	Mrs. Sharon Smith	Mr. & Mrs. Francis Taylor	W.O. Wells Charitable Trust	Mr. Michael Wilkins
Ms. Christine Rullo	Mrs. Charlotte Smoker	Ms. Rhoda Taylor	Wager & Kniffin Appraisers, Inc.	Mrs. Marilyn Williams
Mrs. Keith Rupel	Mr. & Mrs. Louise Smolenski	Ms. Kay Teal	Wal-Mart Store # 2679	Ms. Michele Williams
Ms. Barbara Rupert	Ms. Crystal Snow	Mr. James Teed	Mrs. Delores Walker	Mr. Paul Williams
Ms. Julie Rupp	Mrs. Douglas Soard	Ms. Marilyn Teller	Ms. Eleanor Walter	Ms. Roberta Williams
Mrs. Mary Ryan	Mrs. Maria Solow	Mrs. Janet Templeton	Mrs. Jean Walter	Mrs. Nancy Willis
Mrs. Jane Rynski	Mr. Larry Sommers	The Centre, P.C.	Mrs. Maria Walter	Mrs. Sandra Willis
Sam Winer & Co., Inc.	Ms. Evelyn Sooy	The K.J. Miller Corporation	Mrs. Janet Walters	Mrs. Ellen Wilson
Sam's Club	Dr. & Mrs. John Sorg	The Kelly & Karen Rose Foundation	Mrs. Marceille Wanke	Mrs. Norma Wingo
Mrs. Patricia Sanders	Ms. Doris Spake	The Michiana Income Property Owners Association (Of South Bend)	Mrs. Mary Ellen Warchal- Windham	Wire Design, Inc.
Ms. Dorothy Sappington	Mr. & Mrs. Vince Spirito	Ms. Adartha Thomas	Mr. & Mrs. Rickie Ward	Ms. Marilyn Wise
Mrs. Shirley Sargent	Mr. Carl Sproatt	Mrs. Adelaide Thomas	Mr. Richard Ward	Mr. Paul Wisniewski
M.H. Saul	St. Johns United Church of Christ	Dr. & Mrs. Michael Thomas	Mrs. Norma Wardlow	Mrs. Reba Witt
Mr. Rudolf Scheffrahn	Ms. Dana Stachel	Mrs. Cynthia Thompson	Mr. William Wardlow	Ms. Judy Woldruff
Mrs. Susan Scheffrahn	Mr. H. Lamar Stahly	Frances Thompson	Ms. Patricia Warner	Mrs. Edith Wolfe
Karl Scheffrahn, D.D.S.	Mr. Gary Staien	Mrs. Lois Thompson	Ms. Virginia Warner	Mrs. Leigh Wolff
Mrs. Ruth Scheidel	Ms. Mildred Stark	Mr. Richard Thompson	Waterfall Tenant Association	Women of the Moose, Elkhart Chapter # 73
Mr. Frank Schneider	Starlight Chapter, #181	Mr. Harold Thorn	Mrs. Marcy Watts	Women of the Moose, Goshen Chapter # 1047
Mrs. Karen Schnoebelen	Mrs. Bonnie Statzer	Thornel Associates, Inc.	Ms. Lois Weathers	Ms. Eileen Wood
Mr. Francis Schoenherr	Mrs. Janet Stearns	Ms. Marcine Todd	Mrs. Catherine Weaver	Mr. & Mrs. Larry Woodiwiss
Mrs. Doris Scholfield	Ms. Evelyn Steffy	Mrs. Norma Todd	Mrs. Sherry Weaver	Ms. Dorothy Wyman
Mrs. Betty Schooley	Mrs. Ellen Stenberg	Mr. Erling Toennesen	Mr. & Mrs. Robert Weed	Mrs. Kristine Wyncott
Mrs. Elizabeth Schrader	Ms. Louverne Stephens	Mrs. Lois Torok	Mr. John Weinhardt	Ms. Virginia Wysong
Mrs. Dianna Schrock	Ms. Carolyn Stevenson	Ms. Margaret Trobaugh	Mr. Wallace Weiss	Mr. Michael Yaciw
Mr. Donald Schrock	Steve's Repair Service	Dr. Thomas Troeger	Welch Packaging Group, Inc.	Mrs. Joan Yeater
Mrs. Donna Schrock	Mrs. Erika Stewart	Ms. Betty Troyer	Ms. Sigrid Weldy	Mrs. B. Dawn Yoder
Mr. Ilo Schuetz	Mrs. Harry Stock	Ms. Ima Troyer	Mrs. Nila Wells	Mrs. Beverly Yoder
Mr. James Schultz	Mrs. Norma Jean Stoddard	Mrs. Marilyn Truckey	Welter Foundation	Ms. Connie Yoder
Ms. Delicia Scott	Ms. Margaret Stone	Ms. Betty Ann True	Mr. & Mrs. Dayton Wenger	Ms. Edna Yoder
Select Tool & Eng., Inc.	Mrs. Unita Stoner	Mrs. Phyllis Truex	Ms. Dawn Wenrick	Mrs. Ideana Yoder
Ms. Kathryn Shanholt	Mr. Raymond Stout	Mr. Steven Tubbs	Mrs. Vera Went	Mrs. Jan Yoder
Ms. Marla Sharp	Mr. Richard Stout	Mr. Michael Tudor	Ms. Robin Wesaw	Mr. John Yoder
Mrs. Jennie Shaw	Ms. Judith Stuckey	Mr. Thomas Tull	Mr. Byron Westerfield	Mrs. Kimberly Yoder
Mrs. Doris Sheets	Mr. & Mrs. Kenneth Stuff	Turkey Creek Church of the Brethren	Mr. David Westerfield	Mrs. Monica Yost
Mr. Robert Shemberger	Mr. Lawrence Stump	Ms. Florence Uldricks	Mr. Jerry Westerfield	Mr. Thomas Young
Ms. Carol Shetler	Mrs. Sharon Stump	Mrs. Marilyn Ulrich	Mr. Joe Westerfield	Mr. Van Young
Mrs. Pamela Shultz	Mrs. Evelyn Stutsman	United Automobile Workers of America	Mr. Larry Westerfield	Mrs. Emma Zehr
Mrs. La Rayne Siegmann	Mr. & Mrs. Mel Stutzman	Unity Church of Peace	Ms. Margaret Westerfield	Mrs. Jacqueline Zehr
Mrs. Carol Sigsbee	Mr. Greg Suderman	Mrs. Lavonne Unrue	Mr. O.F. Westerfield	Mrs. Mary Ziegler
Mrs. Mary Sigsbee	Mr. Edward Sullivan	Ms. Patricia Vagi	Westside Social Committee	Mrs. Ruth Ziems
Mrs. Dawn Simala	Ms. Johanna Sutter	Mr. Steven Van Dyke	Ms. Betty Whitaker	Mrs. Gladys Zimmerman
Mrs. Deborah Simms Mail	Mrs. Etta Swafford	Mr. Walter Van Tilburg	Mrs. Doris Whitehead	Mrs. Nancy Zoller
Ms. Dorothy Simpson	Mrs. Marian Swan	Mr. John W. VanHorn	Mr. Wayne Whitehead	Mr. Alphonse Zoucha
Mr. Peter Sincox	Mr. Morris Swan	Dr. & Mrs. Roger VanOrsdoll	Mr. Robert Whitmer	
Ms. Sheryl Skinner	Mrs. Regena Swan	Mrs. Darlene Van Wormer	Mrs. Mary Jane Whittaker	
Ms. Jeanette Slaby	Ms. Sandy Swartz	Mrs. Maryalice Vardaman	Mrs. Susan Whittaker	
Ms. Judy Slack	Ms. Anna Swinehart	Dr. & Mrs. Patrick Viscardi	Mrs. Susan Whittaker	
Mrs. Joan Smeltzer	Mrs. Donna Sympson		Ms. Virginia Wiedenhoeff	
Mr. & Mrs. Brian Smith	Mrs. Dawn Szabo		Mrs. Patricia Wilbur	
Mrs. Carol Smith				

## Our Vision

The health and quality of life of the people of Michiana will steadily improve because of the contributions of the Elkhart General Healthcare System and the medical community. Health improvement for individuals and groups will be promoted through the leadership and cooperative, supportive efforts of Elkhart General.

To achieve comprehensive health improvement, we will develop a model integrated delivery system that nurtures strong relationships with primary and specialty care physicians, as well as with other regional health providers. This System will be recognized not only for its quality and cost-effectiveness, but for its creativity and collaboration in addressing the unique needs of the medically underserved, physically challenged, and other special groups. Further, we will strive to create an environment that makes the System an outstanding place to work and to grow as a professional and team member.

Our work will be carried out in a manner that earns the respect and trust of our patients, their families, and the community. As a not-for-profit organization, our reinvestment strategy will be driven by the health needs of the community we serve.



*This annual report was prepared by the Elkhart General Marketing Department. For additional copies or more information, please call 219-523-3303.*

*Marketing & Community Relations  
Department*

*Elkhart General Hospital  
600 East Boulevard  
Elkhart, Indiana 46514-2499*

*[www.egh.org](http://www.egh.org)*

## MISSION STATEMENT

To Create Healthier Communities By . . .

- Caring for the sick and injured through high quality clinical and supportive services.
- Promoting the health and well-being of individuals and families through education and the early detection and prevention of disease.
- Conducting our activities with compassion and respect for all.
- Recognizing that health is holistic, embracing the body, mind, and spirit.
- Seeking out and partnering with those who share our mission.
- Continuously improving the quality and cost-effectiveness of our services.
- Maintaining the financial viability of the hospital and medical community, while continuing to recognize the charitable purpose of the hospital.